

MODEL: SYCAMORE II MHA02U

PLAN INDEX:

CS	COVER SHEET
A1	ELEVATIONS
A2	FOUNDATION PLAN
A2I	FOUNDATION DETAILS
A3	FIRST FLOOR PLAN
A3I	SECOND FLOOR PLAN
A4	CROSS SECTION

SQUARE FOOTAGE

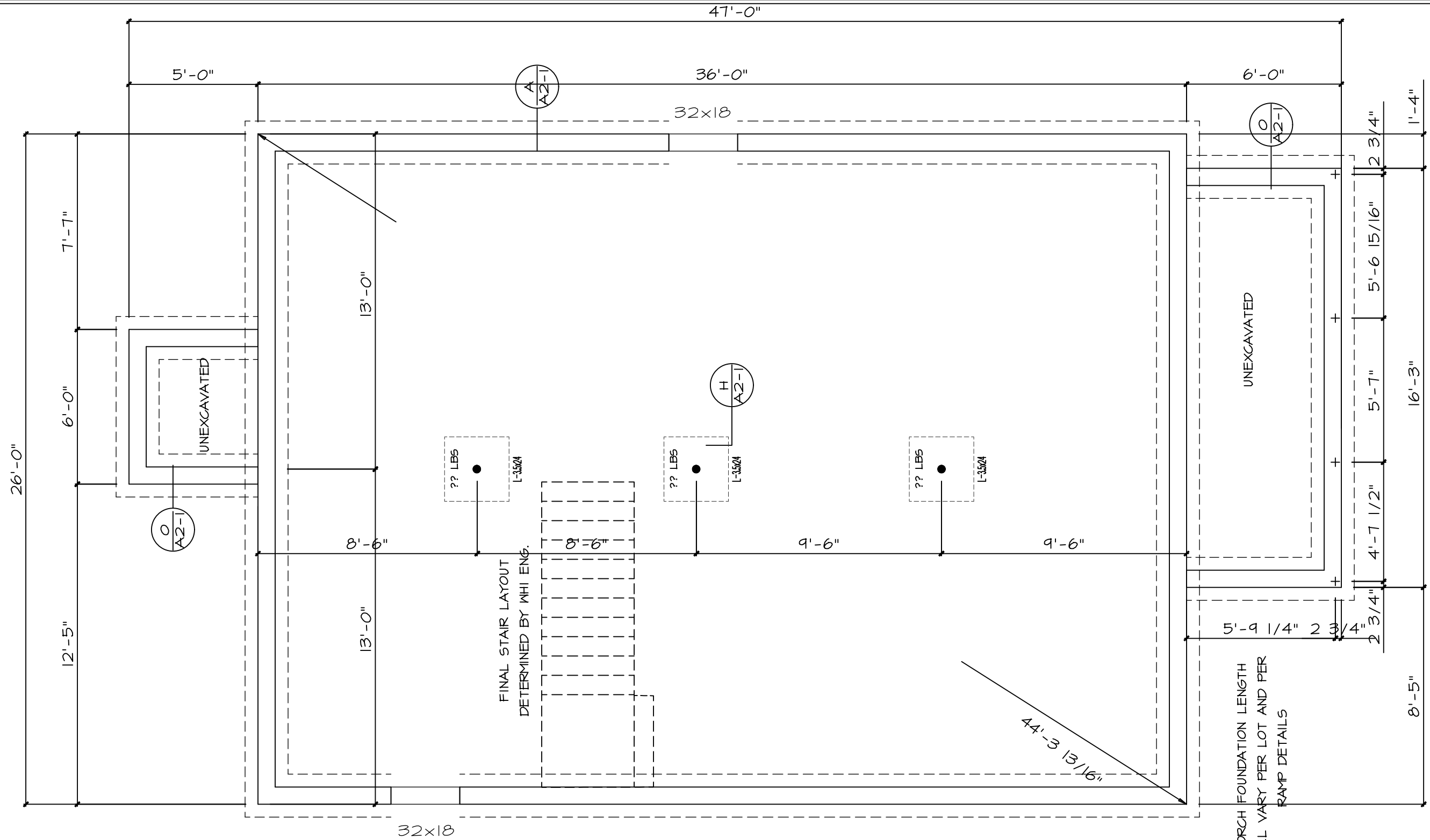
BASEMENT	936	SQ.FT.
FIRST FLOOR	936	SQ.FT.
SECOND FLOOR	936	SQ.FT.
TOTAL LIVING SPACE	1,872	SQ.FT.



SHEET NO. CS	MODEL: SYCAMORE II MHA02U	PRINT DATE: 06/24/2005
	TITLE: COVER	ORDER NO. MHA02U


REV. NO.	DATE	REVISIONS
MASTER	06/24/2005	

THESE PLANS ARE DESIGNED EXCLUSIVELY FOR THE USE OF MAUSAU HOMES BUILDERS. ANY REPRODUCTION OR OTHER USE IS STRICTLY PROHIBITED. WITHOUT THE EXPRESS WRITTEN CONSENT OF MAUSAU HOMES INCORPORATED.

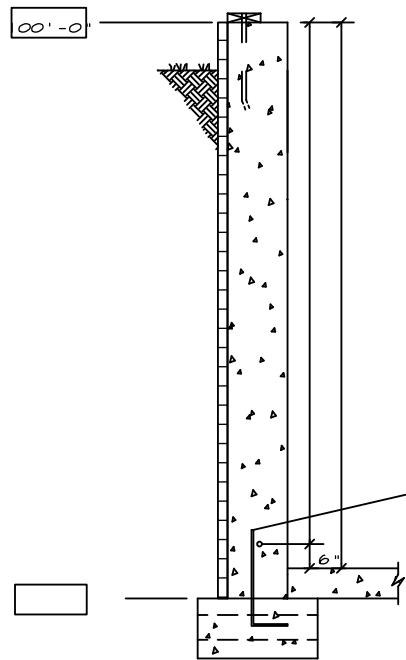


FOUNDATION

SCALE: 1/4" = 1'-0"

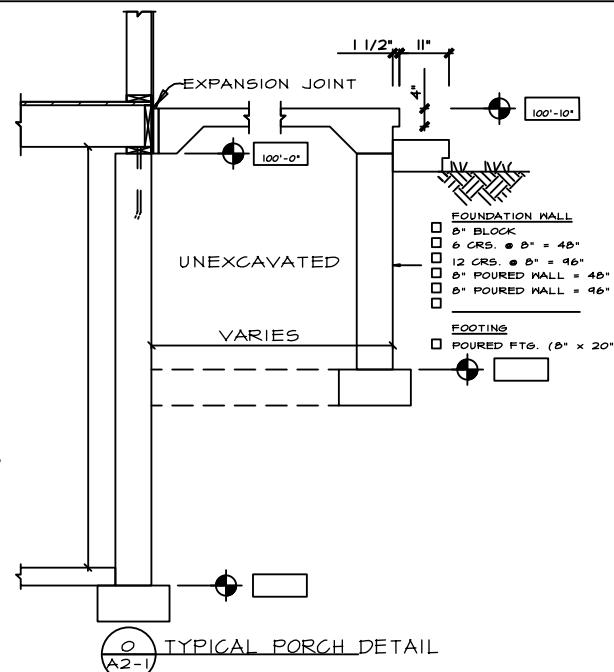
SHEET NO. A2	MODEL SYCAMORE II MHA02U	PRINT DATE 06/24/2005	 America's Custom Builder
	TOR: MHA02U	ORDER NO. MHA02U	
REV. NO.	DRAWN BY	DATE	REVISIONS
MASTER	JLJ	06/24/2005	

NOTICE: THESE PLANS ARE DESIGNED EXCLUSIVELY FOR THE USE OF MAUSAU HOMES BUILDERS. ANY REPRODUCTION OR OTHER USE IS STRICTLY PROHIBITED. WITHOUT THE EXPRESS WRITTEN CONSENT OF MAUSAU HOMES INCORPORATED.



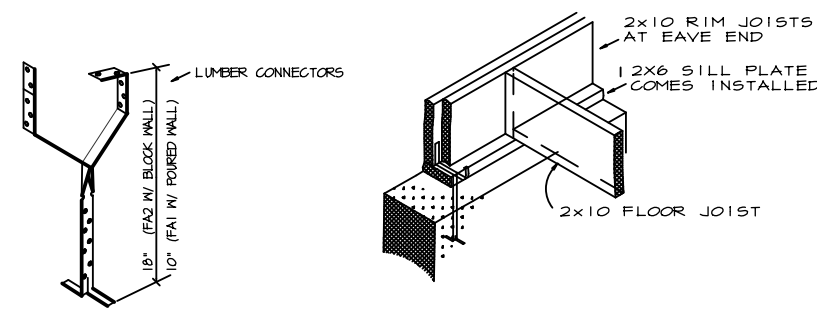
- SILL PLATE REQUIRED**
(SEE GENERAL NOTES)
- FOUNDATION WALL**
- 8" THICK POURED WALL
 - 96" TALL WALL
 - SPRAY ON DAMP PROOFING
 - R5 PERIMETER INSULATION
 - #4 REBAR CONTINUOUS
- POURED CONC. FLOOR**
- 3"
- FOOTING**
- POURED FTG. (8" x 20")
 - DRAIN TILE W/ 3" BLEEDERS
 - (2) #4 REBARS CONTINUOUS
 - #4 BARS @ 3'

- SILL PLATE REQUIRED**
(SEE GENERAL NOTES)
- FOUNDATION WALL**
- 8" THICK POURED WALL
 - 96" TALL WALL
 - SPRAY ON DAMP PROOFING
 - R5 PERIMETER INSULATION
 - #4 REBAR CONTINUOUS
- POURED CONC. FLOOR**
- 3"
- FOOTING**
- POURED FTG. (8" x 20")
 - DRAIN TILE W/ 3" BLEEDERS
 - (2) #4 REBARS CONTINUOUS
 - #4 BARS @ 3'



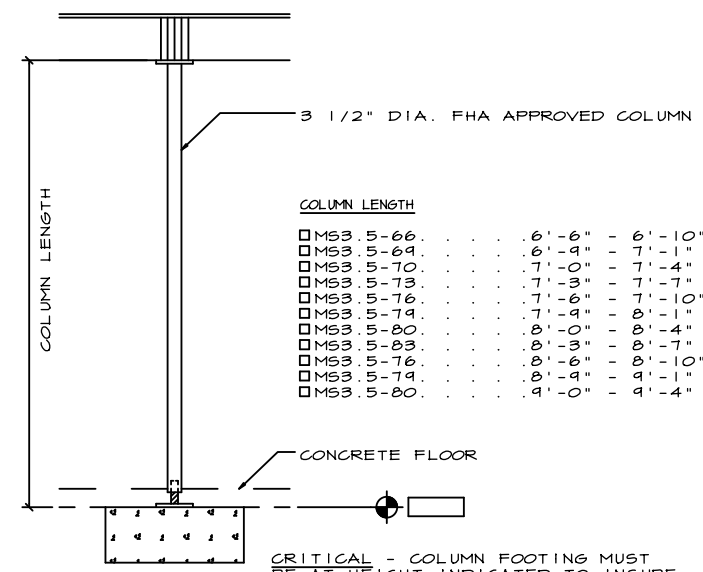
○ TYPICAL PORCH DETAIL
A2-1

○ SECT. A-A
A2-1 SCALE = 3/16" = 1'-0"



FOUNDATION ANCHOR DETAIL

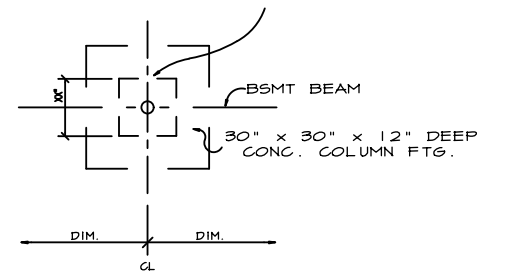
- CORES TO BE FILLED AT EACH ANCHOR IF USING BLOCK.
- FASTEN W/ 8d x 1 1/2" NAILS
- ON UNIT W/ ROUGH SAWS, THE BATTENS ARE TEMPORARILY TACKED AT ANCHOR LOCATIONS SO THAT OUTSIDE STRAP CAN BE FASTENED UNDER BATTEN. SEE FOUNDATION FOR LOCATIONS.
- USP LUMBER CONNECTOR SILL FASTENERS ARE SHOWN. USE FA2 10" FOR POURED & FA2 18" FOR BLOCK WALLS ORDERING INFORMATION CALL 1-800-328-5934



COLUMN LENGTH

M53 5-66	6'-6"	6'-10"
M53 5-69	6'-4"	7'-1"
M53 5-70	7'-0"	7'-4"
M53 5-73	7'-3"	7'-7"
M53 5-76	7'-6"	7'-10"
M53 5-74	7'-4"	8'-1"
M53 5-80	8'-0"	8'-4"
M53 5-83	8'-3"	8'-7"
M53 5-76	8'-6"	8'-10"
M53 5-74	8'-4"	4'-1"
M53 5-80	4'-0"	4'-4"

- (2) #4 REBARS IN EACH DIRECTION HOLD BARS 3" FROM BOTTOM OF FOOTINGS.



CRITICAL - COLUMN FOOTING MUST BE AT HEIGHT INDICATED TO INSURE PROPER FIT OF THE COLUMN SPECIFIED.

○ TYP. COLUMN FTG. DETAIL
A2-1

1. ALL FROST FOOTINGS ARE KEPT AT LEAST 48" BELOW GRADE FOR TYPICAL FROST CONDITIONS. HOWEVER, LOCAL CODES MAY REQUIRE MORE OR LESS FOOTING DEPTH AND IT IS THE RESPONSIBILITY OF THE ON SITE CONTRACTOR TO INSTALL THE FOOTINGS IN ACCORDANCE WITH THE APPROPRIATE CODE.
2. LUMBER CONNECTOR FASTENERS REQUIRED; SEE DETAIL SPACE LUMBER CONNECTORS A MAXIMUM OF 5'-6" O.C. THERE SHALL BE A MINIMUM OF TWO FASTENERS PER PIECE OF PLATE, WITH ONE FASTENER LOCATED WITHIN 12" FROM EACH CORNER.
3. ANCHOR BOLTS REQUIRED; 2X6 WOOD SILL PLATE (PROVIDED BY BUILDER) WITH 1/2" ANCHOR BOLTS 6'-0" O.C EMBEDDED 7" INTO CONCRETE OR REINFORCED MASONRY OR 15" UNREINFORCED GROUTED MASONRY AND COUNTERSUNK FLUSH WITH TOP OF PLATE. THERE SHALL BE A MINIMUM OF TWO BOLTS PER PIECE OF PLATE, WITH ONE BOLT LOCATED WITHIN 12" FROM EACH CORNER.
4. IF DAMPROOFING IS REQUIRED, USE 3/8" THICK PORTLAND CEMENT PARING APPLY ONE COAT (MIN.) BITUMINUS MATERIAL OVER PARING PER MTG. RECOMMENDATIONS.
5. IF A DRAIN TILE IS REQUIRED, IT IS TO SLOPE TO A POSITIVE OUTFALL OR STORM SEWER.

1. THIS DRAWING IS TO PROVIDE THE MASON OR OTHER RESPONSIBLE CONTRACTOR WITH THE PROPER FOUNDATION DIMENSIONS. IT IS HIS RESPONSIBILITY TO ENSURE THAT THE FOUNDATION IS CONSTRUCTED IN ACCORDANCE WITH APPLICABLE CODES AND SOIL CONDITIONS.
2. HEIGHT OF FOUNDATION AND COLUMN SPACING AS SHOWN ARE CRITICAL. IF CHANGES ARE MADE, THEY MUST BE REPORTED IMMEDIATELY TO THE ENGINEERING DEPARTMENT.
3. ALL FOUNDATION FOOTINGS SHALL BEAR ON UNDISTURBED SOIL AT A MINIMUM DEPTH OF 4'-0" BELOW GRADE (DEPENDING ON LOCAL FROST CONDITIONS).
4. VENTING AREA OF BASEMENT WINDOWS SHALL BE 1% OF THE BASEMENT FLOOR AREA (2% FOR BOCA CODES). COMBUSTION AIR FOR HEATING EQUIPMENT AND FOUNDATION INSULATION TO BE IN ACCORDANCE WITH APPLICABLE CODES.
5. FOR CRAWLSPACE FOUNDATIONS, THE MASON CONTRACTOR IS TO PROVIDE AN 18" x 24" ACCESS TO THE CRAWLSPACE AND VENTILATION AT THE RATE OF 1/150 OF THE CRAWLSPACE AREA. COVER CRAWLSPACE WITH 6 MIL. POLY FILM.

NOTICE THESE PLANS ARE DESIGNED EXCLUSIVELY FOR THE USE OF WAUSAU HOMES BUILDERS. ANY REPRODUCTION OR OTHER USE IS STRICTLY PROHIBITED, WITHOUT THE EXPRESS WRITTEN CONSENT OF WAUSAU HOMES INCORPORATED.

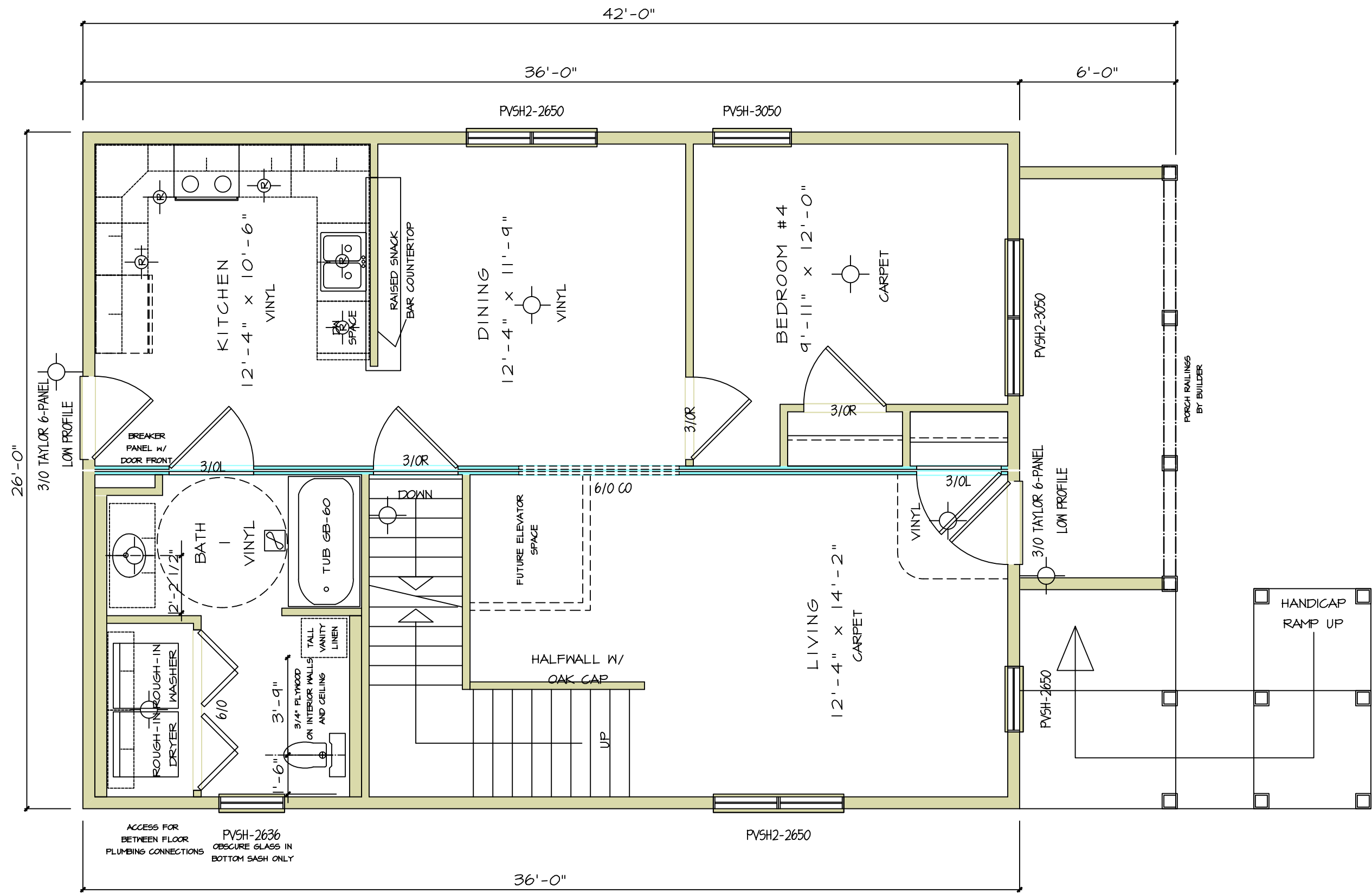
REV. NO.	DATE	REMARKS
MASTER	06/24/2005	
JL-J		



PRINT DATE:	06/24/2005
ORDER NO.:	MHA02U

MODEL:	STANMORE II MHA02U
FOR:	

SHEET NO. A21



FIRST FLOOR

SCALE: 1/4" = 1'-0"

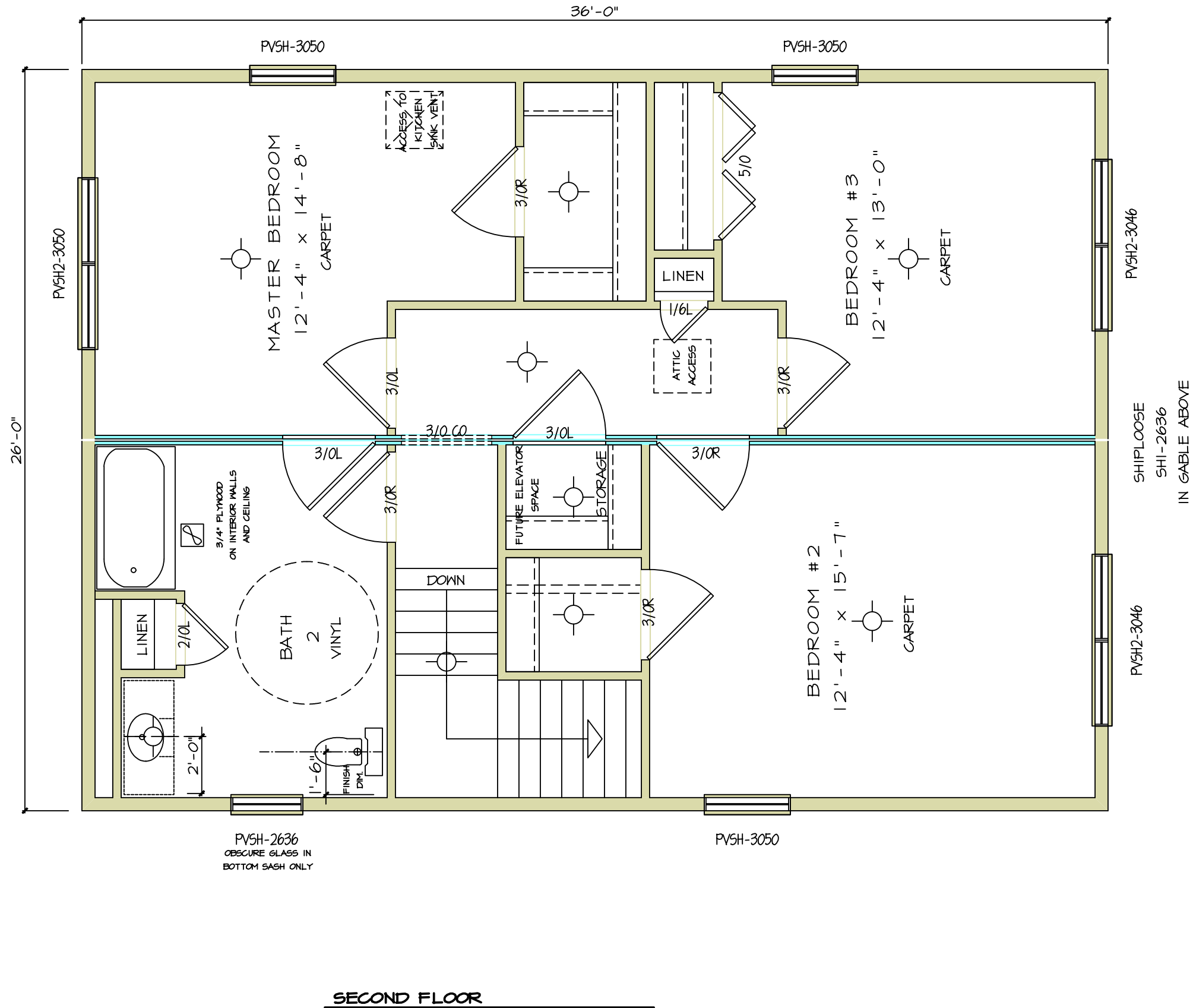
NOTICE THESE PLANS ARE DESIGNED EXCLUSIVELY FOR THE USE OF MAUSAU HOMES BUILDERS. ANY REPRODUCTION OR OTHER USE IS STRICTLY PROHIBITED. WITHOUT THE EXPRESS WRITTEN CONSENT OF MAUSAU HOMES INCORPORATED.

REV. NO.	DATE	REVISIONS
MASTER	06/24/2005	
JLJ		



MODEL:	SYCAMORE II MHA02U
PRINT DATE:	06/24/2005
ORDER NO.:	MHA02U

SHEET NO.:	A3
------------	----



SHEET NO.
A31

MODEL:
SYCAMORE II MHA02U

ORDER NO.
MHA02U

PRINT DATE:
06/24/2005

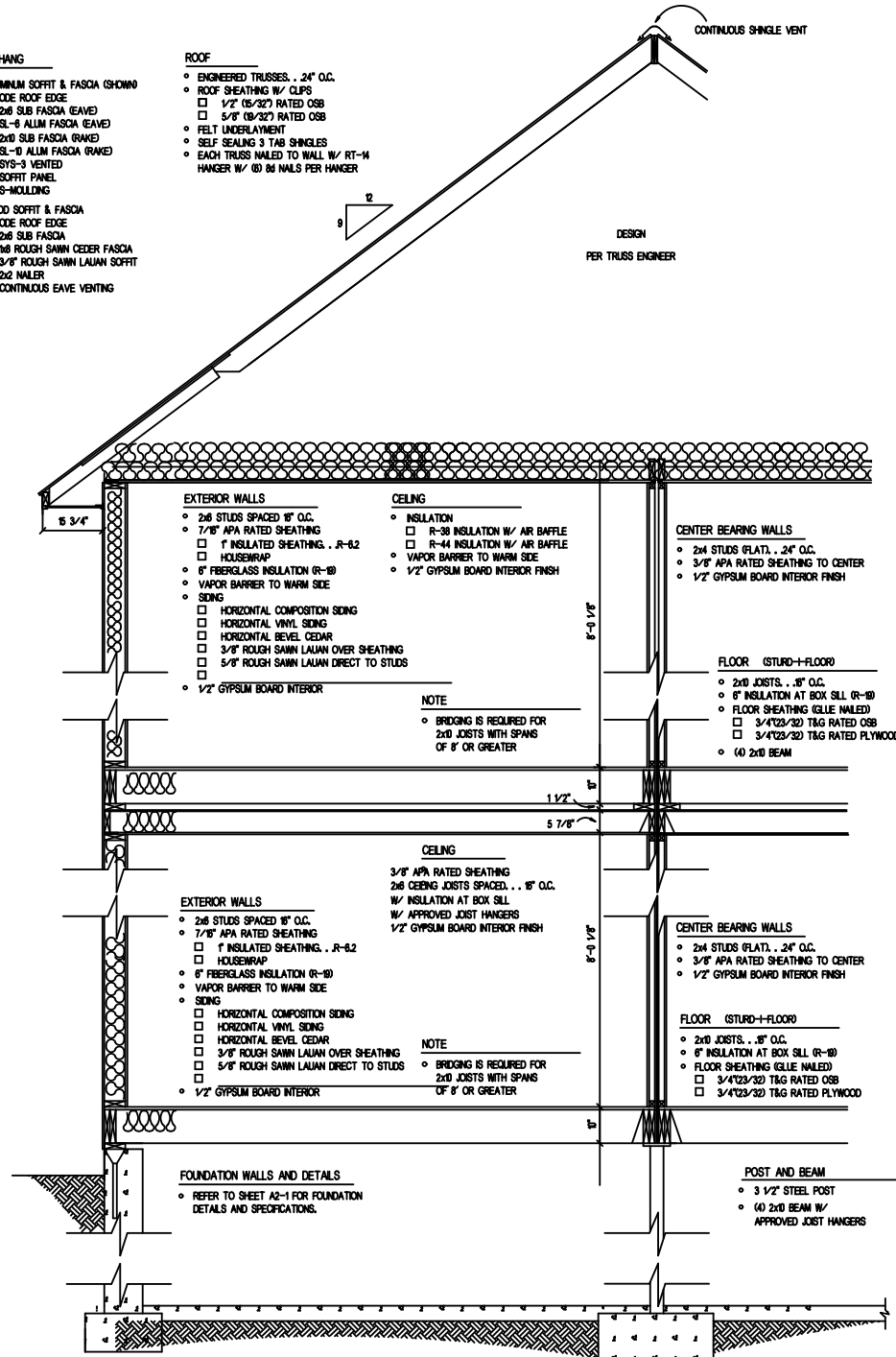


REV. NO.	DATE	REVISIONS
MASTER	06/24/2005	

NOTICE
THESE PLANS ARE DESIGNED EXCLUSIVELY FOR THE USE OF MAUSAU HOMES BUILDERS. ANY REPRODUCTION OR OTHER USE IS STRICTLY PROHIBITED. WITHOUT THE EXPRESS WRITTEN CONSENT OF MAUSAU HOMES INCORPORATED.

- OVERHANG**
- ALUMINUM SOFFIT & FASCIA (SHOWN)
 - ODE ROOF EDGE
 - 2x6 SUB FASCIA (EAVE)
 - SL-9 ALUM FASCIA (EAVE)
 - 2x10 SUB FASCIA (RAKE)
 - SL-10 ALUM FASCIA (RAKE)
 - SYS-3 VENTED
 - SOFFIT PANEL
 - S-MOULDING
- WOOD SOFFIT & FASCIA
- ODE ROOF EDGE
 - 2x6 SUB FASCIA
 - 1x6 ROUGH SAWN CEDAR FASCIA
 - 3/8" ROUGH SAWN LAUAN SOFFIT
 - 2x2 NAUER
 - CONTINUOUS EAVE VENTING

- ROOF**
- ENGINEERED TRUSSES, 24" O.C.
 - ROOF SHEATHING W/ CLIPS
 - 1/2" (5/32") RATED OSB
 - 5/8" (9/32") RATED OSB
 - FELT UNDERLAYMENT
 - SELF SEALING 3 TAB SHINGLES
 - EACH TRUSS NAILED TO WALL W/ RT-14
 - HANGER W/ (8) 8d NAILS PER HANGER



ROOF TRUSS LOADING SUMMARY

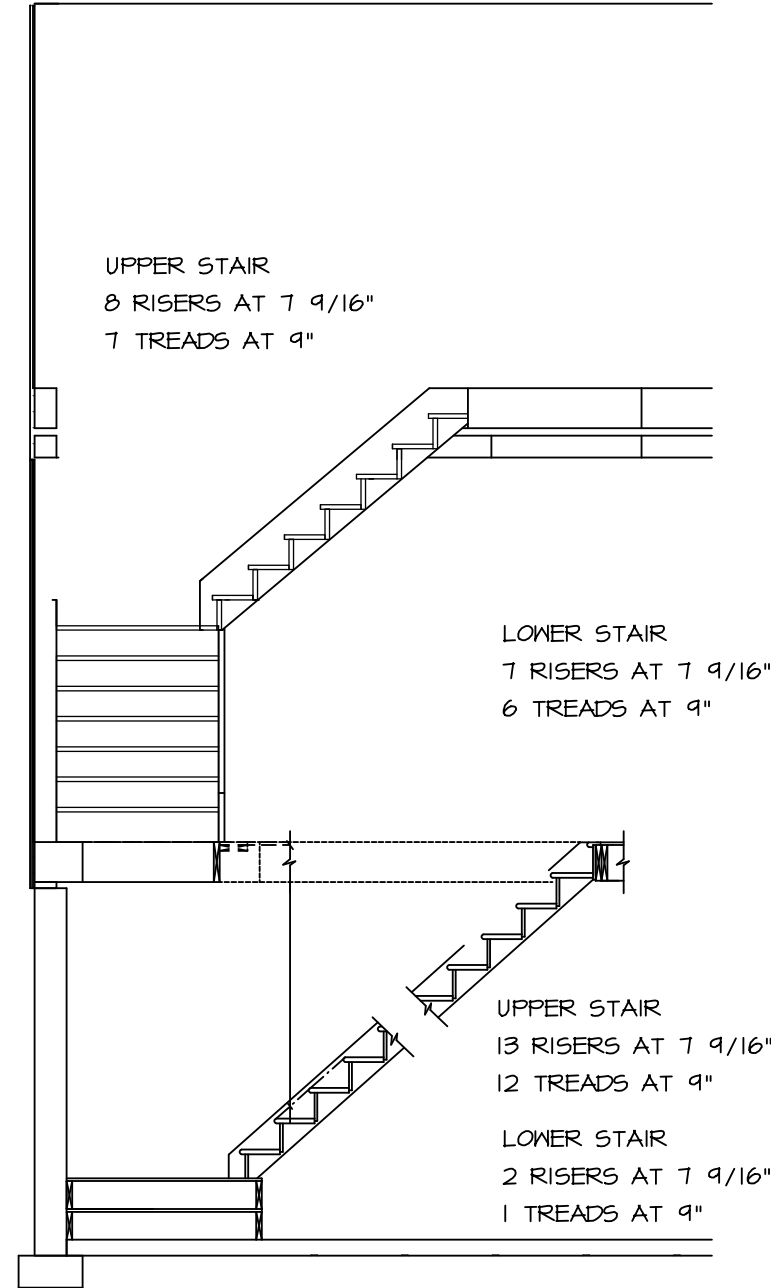
LOADING	LIVE	DEAD
TOP CHD	XX PSF	7.0 PSF
BTM CHD	0.0 PSF	10.0 PSF
TOTAL	XX PSF	17.0 PSF

FLOOR LOADING SUMMARY

LIVE LOAD	40.0 PSF
DEAD LOAD	10.0 PSF

GENERAL NOTES

1. SOFFIT VENTS AND RIDGE VENTS TO PROVIDE A MINIMUM VENTILATION OF 1/300TH OF THE HORIZONTAL PROJECTION OF THE ROOF AREA.
2. ATTIC ACCESS PROVIDED BY 22" x 30" ACCESS OPENING.
3. FLOOR TO SILL HEIGHT OF BEDROOM WINDOWS TO BE 44" MAX.
4. FOUNDATION INSULATION PER LOCAL CODE REQUIREMENTS.
5. BUILDER TO INSTALL STAIR RAILING TO THE BASEMENT STAIRS PER LOCAL CODE REQUIREMENTS.
6. A SMOKE DETECTOR SHALL BE PROVIDED ON ALL LEVELS AND WILL BE INTERCONNECTED.



NOTICE
 THESE PLANS ARE DESIGNED EXCLUSIVELY FOR THE USE OF MAUSAU HOMES BUILDERS. ANY REPRODUCTION OR OTHER USE IS STRICTLY PROHIBITED. WITHOUT THE EXPRESS WRITTEN CONSENT OF MAUSAU HOMES INCORPORATED.

REV. NO.	DATE	BY	REVISIONS
MASTER	06/24/2005	JILJ	



PRINT DATE:	06/24/2005
ORDER NO.:	MHA02U

MODEL:	SYCAMORE II MHA02U
TITLE:	

SHEET NO. A4